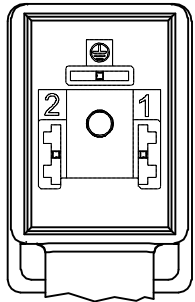
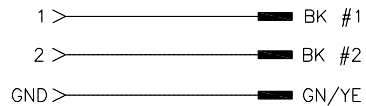


VALVE END VIEW



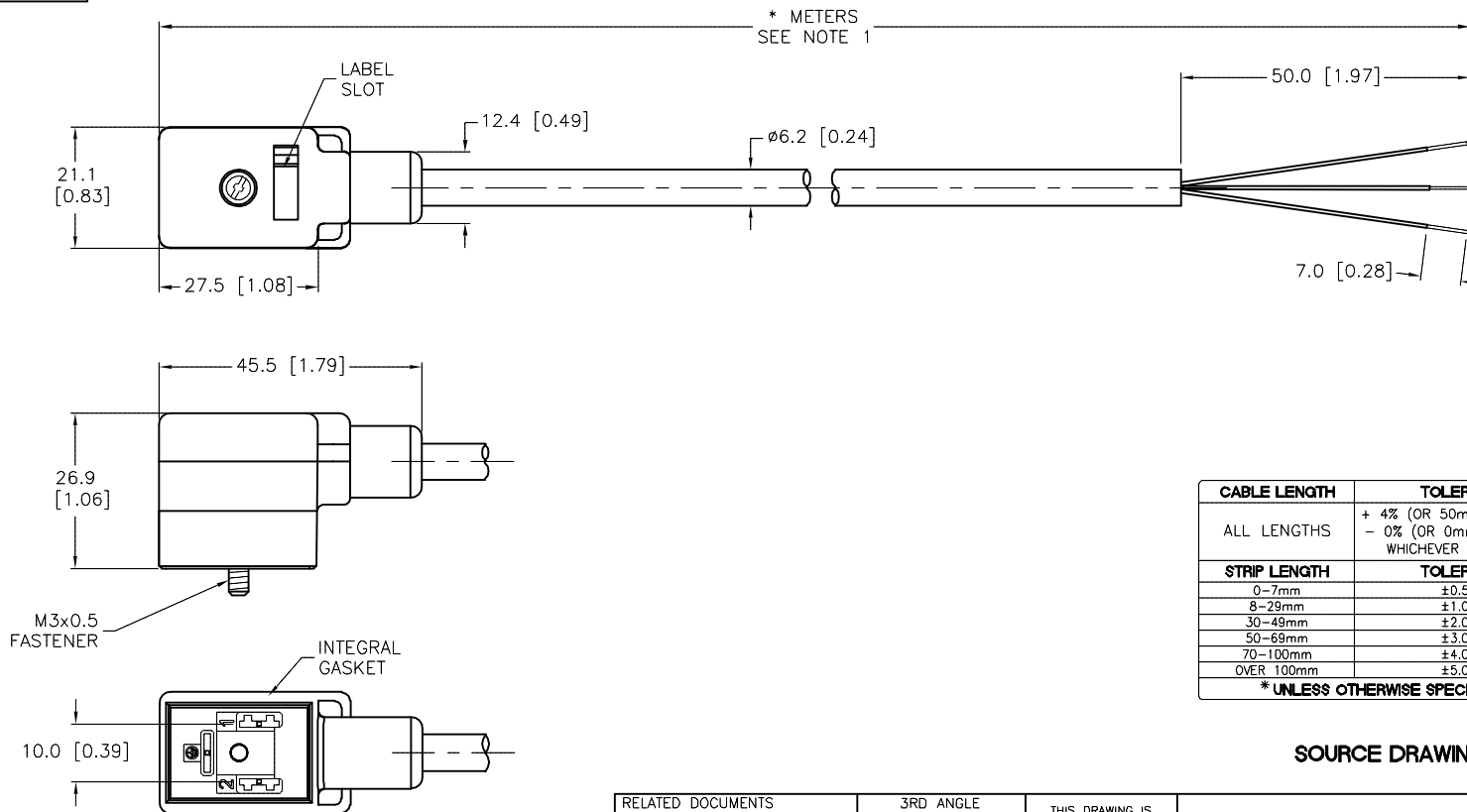
1 = BLACK#1  
2 = BLACK#2  
GND = GRN/YEL

WIRING DIAGRAM



SPECIFICATIONS

|                               |                                  |
|-------------------------------|----------------------------------|
| CONTACT CARRIER MATERIAL      | NYLON                            |
| CONTACT MATERIAL/PLATING      | BRASS/SILVER                     |
| MOLDED HEAD MATERIAL/COLOR    | TPU/TRANSLUCENT BLACK            |
| RATED CURRENT                 | 4.0 A                            |
| RATED VOLTAGE                 | 0-220 VAC/DC                     |
| OUTER JACKET MATERIAL/COLOR   | PVC/GRAY                         |
| CONDUCTOR INSULATION MATERIAL | PVC                              |
| NUMBER OF CONDUCTORS          | 3x18 AWG                         |
| TEMPERATURE RATING            | -40°C TO +105°C (-40°F TO 221°F) |
| PROTECTION CLASS              | MEETS NEMA 1,3,4,6P AND IEC IP67 |



| CABLE LENGTH | TOLERANCE*  |
|--------------|---|
| ALL LENGTHS  | + 4% (OR 50mm) OF LENGTH<br>- 0% (OR 0mm) OF LENGTH<br>WHICHEVER IS GREATER |
| STRIP LENGTH | TOLERANCE*  |
| 0-7mm        | ±0.5mm  |
| 8-29mm       | ±1.0mm  |
| 30-49mm      | ±2.0mm  |
| 50-69mm      | ±3.0mm  |
| 70-100mm     | ±4.0mm  |
| OVER 100mm   | ±5.0mm  |

\* UNLESS OTHERWISE SPECIFIED

SOURCE DRAWING - FOR REFERENCE ONLY

NOTES:

1. "\*" INDICATES CABLE LENGTH IN METERS. CONTACT TURCK TO ORDER SPECIFIC LENGTHS.

|                                |  |   |  |  |  |  |  |
|--------------------------------|--|---|--|--|--|--|--|
| RELATED DOCUMENTS              |  | 3RD ANGLE PROJECTION  |  | THIS DRAWING IS CONFIDENTIAL AND THE PROPERTY OF TURCK INC. USE OF THIS DOCUMENT WITHOUT WRITTEN PERMISSION IS PROHIBITED. |  | 3000 CAMPUS DRIVE<br>MINNEAPOLIS, MN 55441<br>1-800-544-7769<br>(763) 553-7300<br>(763) 553-0708 fax<br>www.turck.us |  |
| 1.<br>2.<br>3.<br>4.           |  |   |  | DRFT KMY DATE 03/14/13<br>APVD R.D. SCALE 1=1.3  |  | DESCRIPTION<br>VBS 2-A653-*M   |  |
| MATERIAL<br>SEE SPECIFICATIONS |  | ALL DIMENSIONS DISPLAYED ON THIS DRAWING ARE FOR REFERENCE ONLY |  | UNIT OF MEASUREMENT<br><b>MILLIMETER [ INCH ]</b>  |  | IDENTIFICATION NO.   |  |
| FINISH<br>SEE SPECIFICATIONS   |  | CONTACT TURCK FOR MORE INFORMATION                              |  | DO NOT SCALE THIS DRAWING  |  | REV<br>A   |  |
| A DRAWING RELEASE              |  | RDS 04/08/13  |  | FILE: 777031206  |  | SHEET 1 OF 1   |  |
| REV DESCRIPTION                |  | BY DATE ECO NO.   |  |  |  |  |  |